



Canadian Pacific Railway Derailment 2/4/2015 Balltown, Iowa Eric Nold R7 EPA OSC



4/24/2015



Initial Information

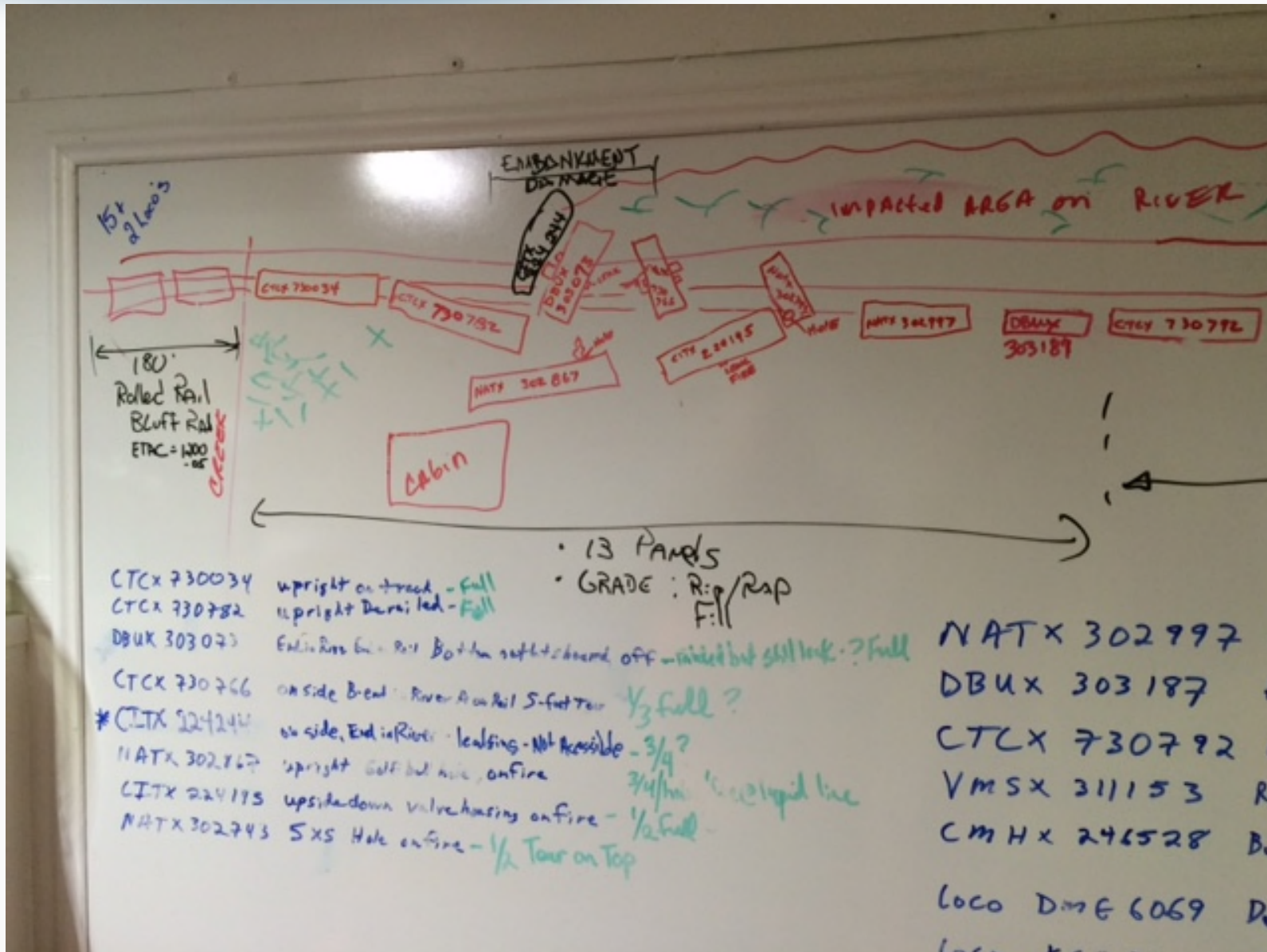
- NRC report
- ~ 6 tankers derailed – ethanol (denatured?)
- One car on fire and maybe one in Mississippi River
- Local FD/HazMat and PRP on-scene, IDNR enroute
- No assistance requested

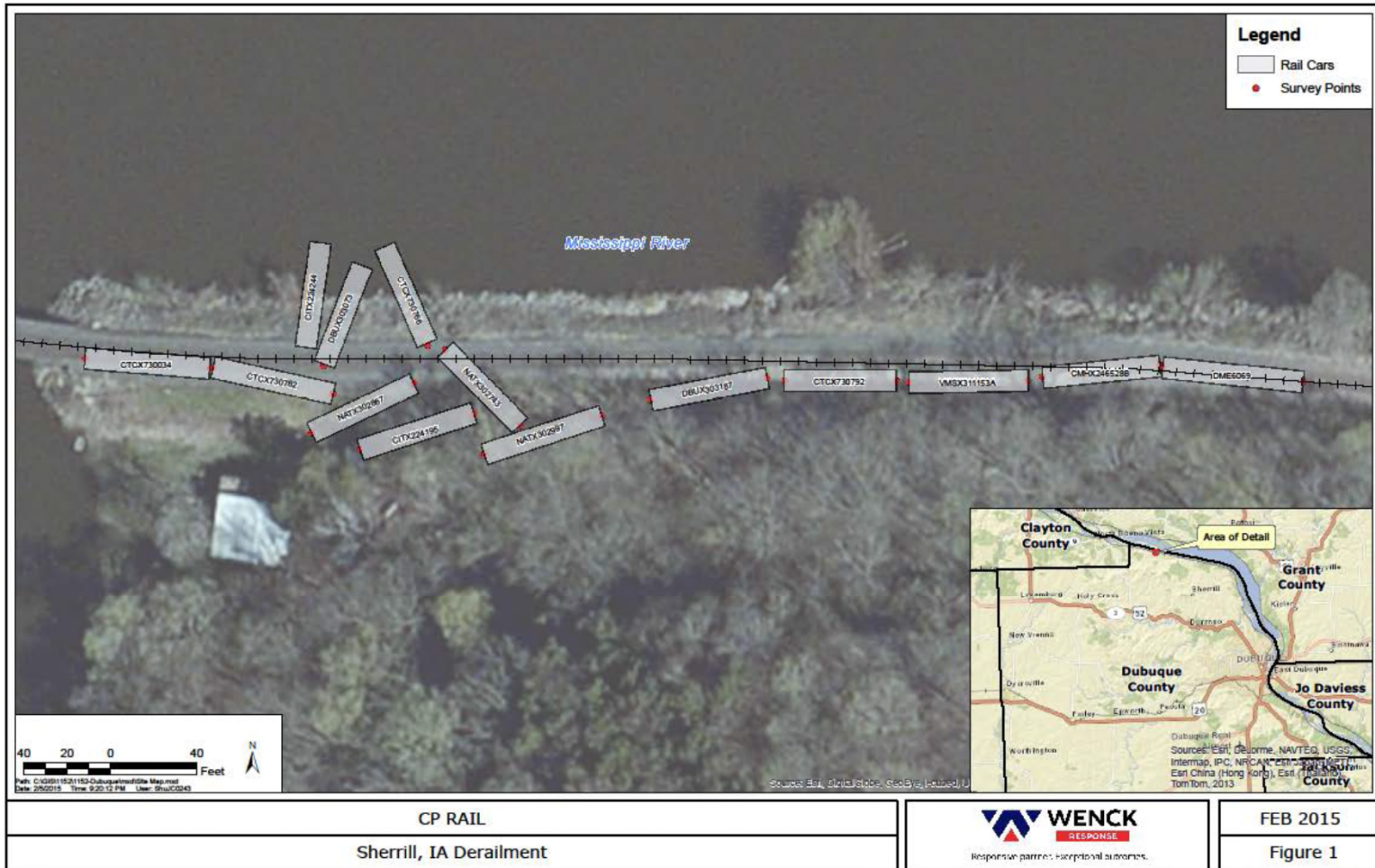


4/24/2015

U.S. Environmental Protection Agency

3









































4/24/2015

U.S. Environmental Protection Agency

23



4/24/2015

U.S. Environmental Protection Agency

24



ISSUES

- OPA vs CERCLA
- Go – No go
- Fitting in without taking the lead (OSC Shall...)
- Remote, multijurisdictional, communication, weather
- 404 permits – emergency then long term
- Too Lean = Starvation?
- Apples and Oranges (Rock River vs Mississippi River)
- Let it ride or establish firm ICS
- Modeling
- Many potential PRFAs – no requests
- How to sample at an ethanol spill (media, methods, quantity, duration, depth intervals, etc..)





4/24/2015

U.S. Environmental Protection Agency

27



4/24/2015

U.S. Environmental Protection Agency

28